

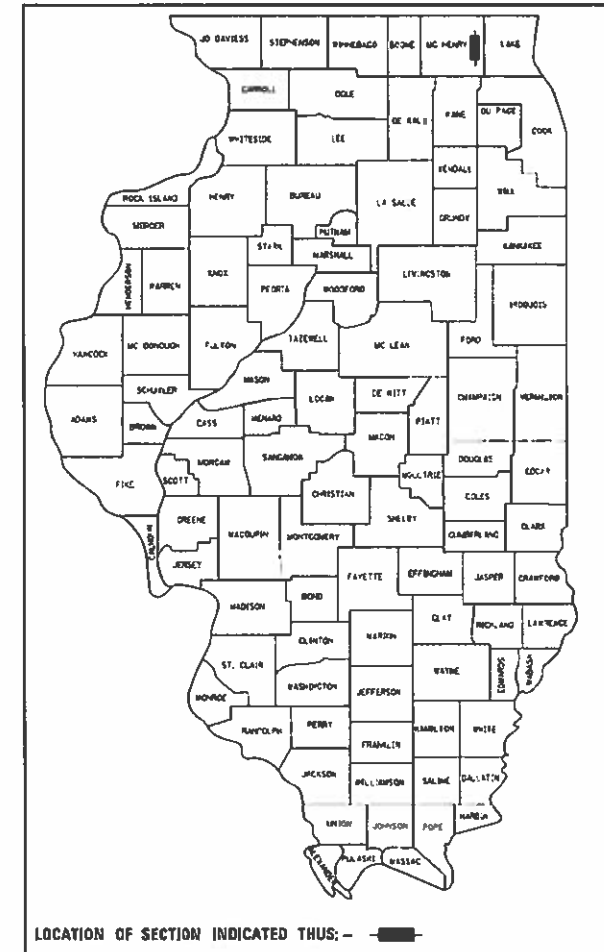
F.A.U. RTE.	SECTION	COUNTY	TOTAL SHEETS	SHEET NO.
0156	20-00016-00-R5	MCHENRY	73	1
FED. ROAD DIST. NO 1	ILLINOIS	CONTRACT NO. 61J68		

FOR INDEX OF SHEETS, SEE SHEET NO. 2 01-19-2024 LETTING ITEM 084

FOR LIST OF HIGHWAY STANDARDS, SEE SHEET NO. 2

STATE OF ILLINOIS DEPARTMENT OF TRANSPORTATION PLANS FOR PROPOSED FEDERAL AID HIGHWAY

FAU ROUTE 0156 (RIVERSIDE DRIVE)
VILLAGE LIMITS SOUTH OF RUNNING BROOK
FARM BLVD TO JOHNSBURG ROAD
ROADWAY RESURFACING AND CULVERT
REPLACEMENT
SECTION NO. 20-00016-00-RS
PROJECT NO. 6YP7(599)
VILLAGE OF JOHNSBURG
MCHENRY COUNTY



HRGreen
HRGreen.com
Illinois Professional Design Firm
184-001322

STATE OF ILLINOIS
DEPARTMENT OF TRANSPORTATION

APPROVED *July 14, 2023*
Wanda White
VILLAGE OF JOHNSBURG

PASSED *July 20, 2023*
Approve
DISTRICT ONE ENGINEER OF LOCAL ROADS AND STREETS

RELEASING FOR BID
BASED ON LIMITED REVIEW *July 20, 2023*
Jose Rios
REGIONAL ENGINEER

FEDERAL AID PROGRAM ENGINEER: CARMEN E. RAMOS, SCHAMBERG, IL

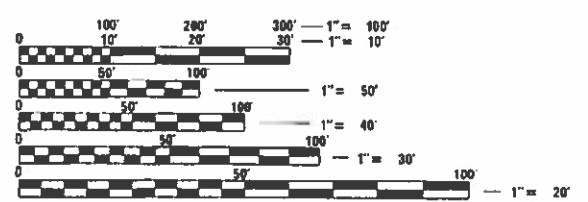
TRAFFIC DATA

ADT:
RIVERSIDE DRIVE: 3,600 (2021)

ROADWAY	SPEED POSTED	DESIGN SPEED
RIVERSIDE DRIVE	45 MPH	45 MPH

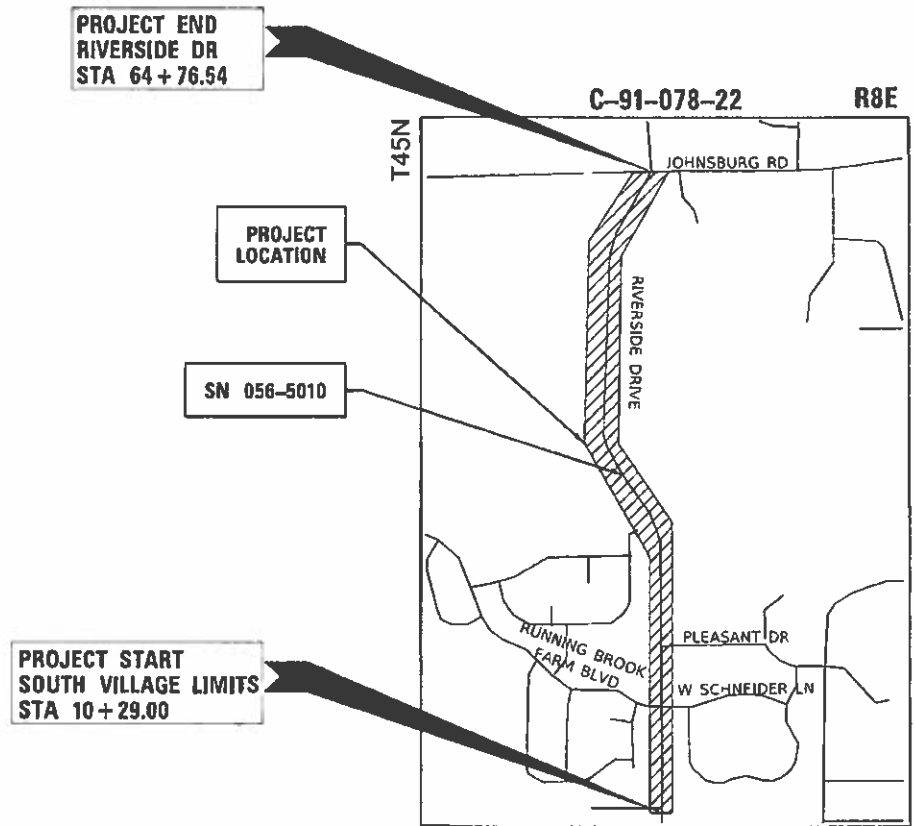
DESIGN DESIGNATION

RIVERSIDE DRIVE: MAJOR COLLECTOR



FULL SIZE PLANS HAVE BEEN PREPARED USING STANDARD ENGINEERING SCALES. REDUCED SIZED PLANS WILL NOT CONFORM TO STANDARD SCALES. IN MAKING MEASUREMENTS ON REDUCED PLANS, THE ABOVE SCALES MAY BE USED.

J.U.L.I.E.
JOINT UTILITY LOCATION INFORMATION FOR EXCAVATORS
1-800-892-0123
OR 811



LOCATION MAP
N.T.S.

PROJECT LENGTH
NET AND GROSS LENGTH OF PROJECT = 5,448 FT. = 1.03 MILES

SEAL
JEFFREY J. STRZALKA
LICENSED PROFESSIONAL ENGINEER
STATE OF ILLINOIS
062-040653
7/11/2023

CONTRACT 61J68

PRINTED BY THE AUTHORITY
OF THE STATE OF ILLINOIS

SIGN LEGEND

1 W20-2(0)-4848

2 M3-1(0)-2412 SPECIAL 24"x18" VARIABLE 6" BLACK LETTERS ON ORANGE REFLECTIVE BACKGROUND M4-9 (0)-3024

3 M3-1(0)-2412 SPECIAL 24"x18" VARIABLE 6" BLACK LETTERS ON ORANGE REFLECTIVE BACKGROUND M4-9L(0)-3024

4 M3-1(0)-2412 SPECIAL 24"x18" VARIABLE 6" BLACK LETTERS ON ORANGE REFLECTIVE BACKGROUND M4-9L(0)-3024

5 M3-1(0)-2412 SPECIAL 24"x18" VARIABLE 6" BLACK LETTERS ON ORANGE REFLECTIVE BACKGROUND M4-9R(0)-3024

6 M3-1(0)-2412 SPECIAL 24"x18" VARIABLE 6" BLACK LETTERS ON ORANGE REFLECTIVE BACKGROUND M4-9R(0)-3024

7 4-8A-2418

8 M3-3(0)-2412 SPECIAL 24"x18" VARIABLE 6" BLACK LETTERS ON ORANGE REFLECTIVE BACKGROUND M4-9(0)-3024

9 M3-3(0)-2412 SPECIAL 24"x18" VARIABLE 6" BLACK LETTERS ON ORANGE REFLECTIVE BACKGROUND M4-9L(0)-3024

10 M3-3(0)-2412 SPECIAL 24"x18" VARIABLE 6" BLACK LETTERS ON ORANGE REFLECTIVE BACKGROUND M4-9L(0)-3024

11 M3-3(0)-2412 SPECIAL 24"x18" VARIABLE 6" BLACK LETTERS ON ORANGE REFLECTIVE BACKGROUND M4-9R(0)-3024

12 M3-3(0)-2412 SPECIAL 24"x18" VARIABLE 6" BLACK LETTERS ON ORANGE REFLECTIVE BACKGROUND M4-9R(0)-3024

13 OMITTED

14 W20-3(0)-4848

16R R11-4-6030 M4-10R-4818

17 (1) (2)

- ** NOTES:**
- OVERLAY PANEL (1) TO CONTAIN STARTING DATE OF FULL CLOSURE AND DETOUR IMPLEMENTATION (I.E. "FROM APR 2").
 - OVERLAY PANEL (2) TO CONTAIN ENDING MONTH OF FULL CLOSURE AND DETOUR (I.E. "THROUGH JULY". OMIT THE DATE ON PANEL (2); PROVIDE MONTH ONLY).
 - SIGNS ARE TO BE PLACED NEAR THE LIMITS OF THE ROAD CLOSURE - ONE IN EACH DIRECTION. THESE SIGNS SHALL BE PAID FOR AS 'TEMPORARY INFORMATION SIGNING'.

DETOUR LEGEND

DETOUR ROUTE

DETOUR GUIDE SIGN

BARRICADE, TYPE III

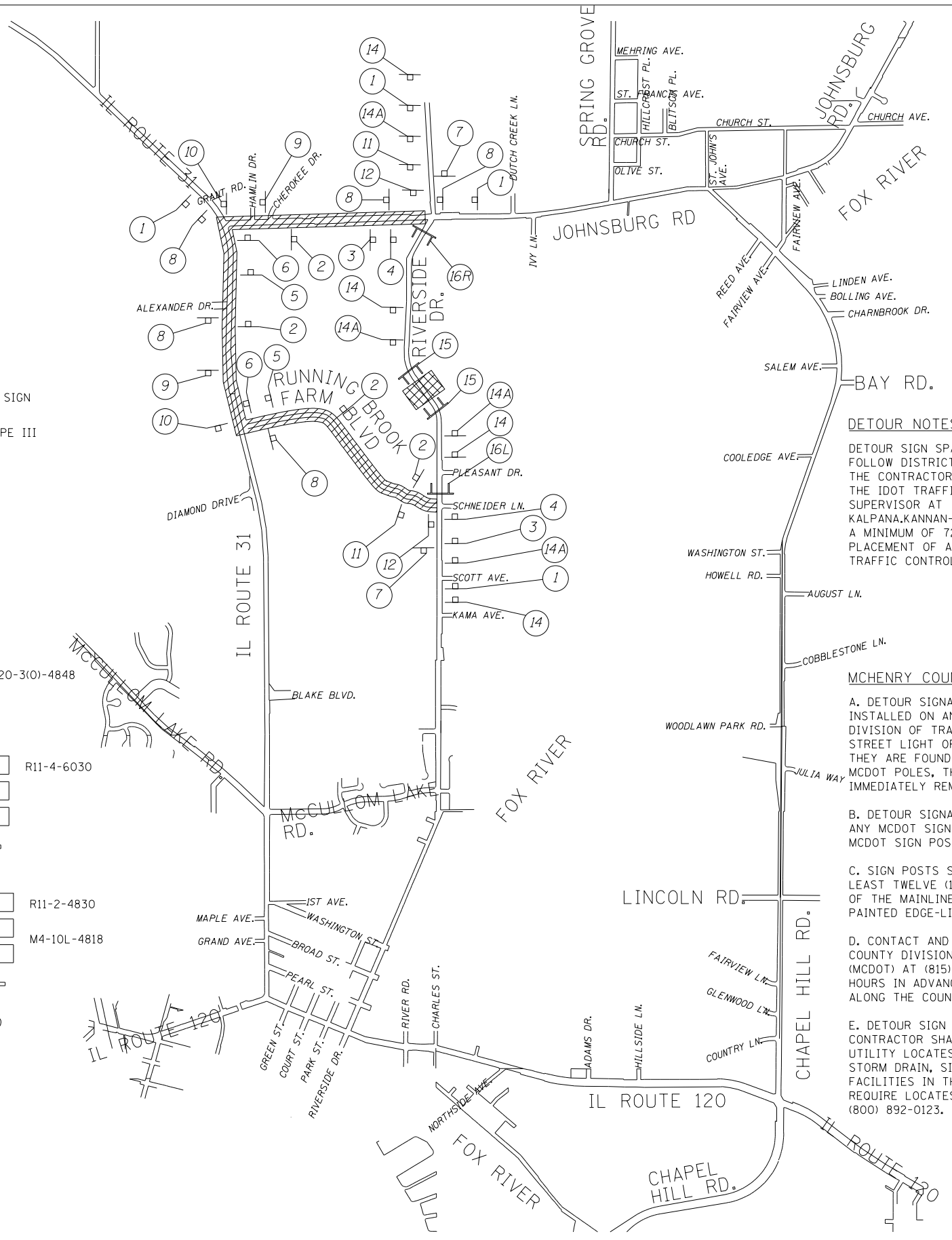
WORK ZONE

14A W20-3(0)-4848

15 R11-4-6030

16L R11-2-4830 M4-10L-4818

* NOTE: SIGNS ARE TO BE MOUNTED ABOVE BARRICADE RAILS.



DETOUR NOTES

DETOUR SIGN SPACING SHALL FOLLOW DISTRICT DETAIL TC-21. THE CONTRACTOR MUST CONTACT THE IDOT TRAFFIC CONTROL SUPERVISOR AT KALPANA.KANNAN-HOSADURGA@ILLINOIS.GOV A MINIMUM OF 72 HOURS PRIOR TO PLACEMENT OF ANY TEMPORARY TRAFFIC CONTROL DEVICES.

MCHENRY COUNTY DETOUR NOTES

A. DETOUR SIGNAGE SHALL NOT BE INSTALLED ON ANY MCHENRY COUNTY DIVISION OF TRANSPORTATION (MCDOT) STREET LIGHT OR SIGNAL POLES. IF THEY ARE FOUND TO BE INSTALLED ON MCDOT POLES, THEY WILL BE IMMEDIATELY REMOVED.

B. DETOUR SIGNAGE SHALL NOT BLOCK ANY MCDOT SIGNS AND CANNOT USE THE MCDOT SIGN POSTS.

C. SIGN POSTS SHALL BE INSTALLED AT LEAST TWELVE (12) FEET FROM THE EDGE OF THE MAINLINE ROADWAY (WHITE PAINTED EDGE-LINE).

D. CONTACT AND NOTIFY THE MCHENRY COUNTY DIVISION OF TRANSPORTATION (MCDOT) AT (815) 334-4960 AT LEAST 48 HOURS IN ADVANCE OF PLACING SIGNAGE ALONG THE COUNTY HIGHWAYS(S).

E. DETOUR SIGN INSTALLATION CONTRACTOR SHALL CALL JULIE FOR UTILITY LOCATES. MCDOT MAY HAVE STORM DRAIN, SIGNAL AND LIGHTING FACILITIES IN THESE AREAS THAT COULD REQUIRE LOCATES. CONTACT JULIE AT (800) 892-0123.

HRG PROJECT NO: 21/700
 HRG PROJ CONTACT:
 FILE NAME: 21/700-SRT-detour.dgn
 PEN TABLE: 10/11/2023



USER NAME = jstrzal	DESIGNED - JJS	REVISED -
PLOT SCALE = 2000.0000' / in.	CHECKED - JJS	REVISED - XX/XX/XXXX
PLOT DATE = 10/11/2023	DATE -	REVISED - XX/XX/XXXX

**STATE OF ILLINOIS
 DEPARTMENT OF TRANSPORTATION**

DETOUR PLAN RIVERSIDE DRIVE	
SCALE: N.T.S.	SHEET 1 OF 1 SHEETS STA. TO STA.

F.A. RTE.	SECTION	COUNTY	TOTAL SHEETS	SHEET NO.
156	20-00016-00-R5	MCHENRY	73	29
CONTRACT NO. 61168			ILLINOIS FED. AID PROJECT	