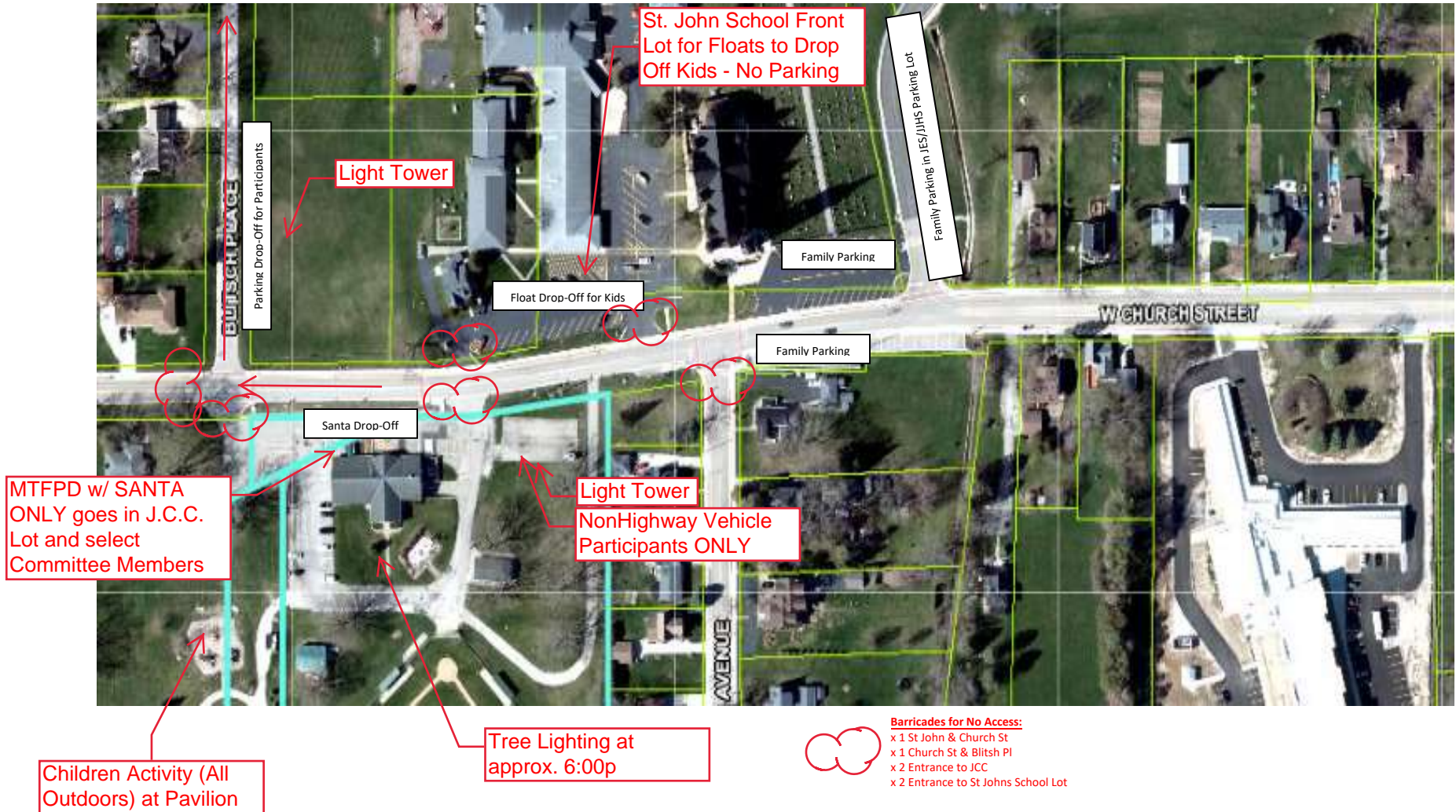


Johnsburg Community Club & Rescue Squad Park (Rear)
2315 Church St, Johnsburg, IL 60051



- The goal is at the end of parade for continued parties to keep rolling Northbound on Blitsch Place towards Mehring and away they go on Spring Grove Rd. – Far North and West.
- The other parties to use St Johns Baptist School Lot to disembark participants on floats and etc since existing lighting and Light Tower staged... - Immediate North Parking Lot.
- The Parade entries that are staying to hug the east shoulder of Blitsch Pl and park, partial road and partial ditch, Light Tower in the St John property lighting up street. The field conditions are too soft to accept vehicle parking – North, parked along eastside.
- The NonHighway Vehicles get parking on the JCC Old basketball court for parking. – Immediate South Parking Lot.
- Parking for end parade/tree lighting participants are in Church St Overflow, St Johns Cemetery Lot and JES/JHS west parking lot. If you are NOT in the Parade, PLEASE do not park in the immediate area of J.C.C. or Blitsch Pl, this is reserved for Parade participants.
- Try to avoid as many vehicles as possible in the J.C.C. Parking Lot, it's a choke point and we need to clear Church St ASAP so the trail of parade isn't stuck on Johnsburg Rd.