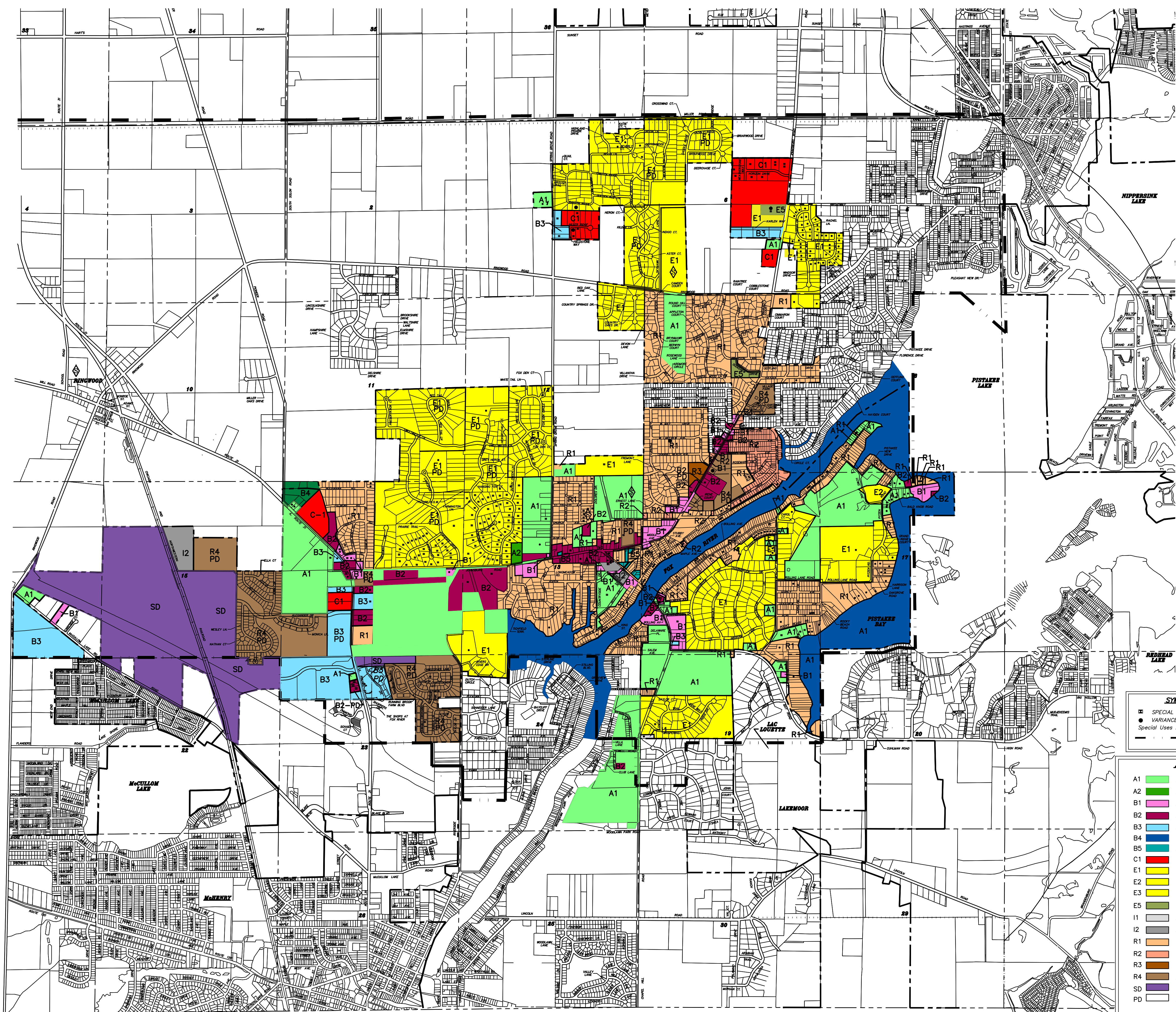


VILLAGE OF JOHNSBURG ZONING MAP



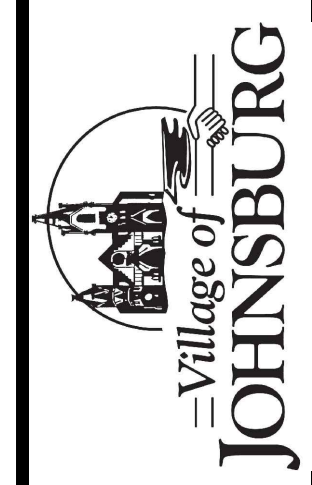
SYMBOL LEGEND

- SPECIAL USE PERMITS
- VARIANCES
- Special Uses Are Also Called Conditional Uses
- SCHOOL DISTRICT BOUNDARY

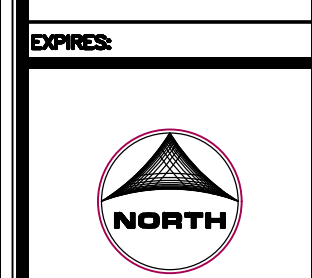
ZONING LEGEND

- A1 AGRICULTURE DISTRICT
- A2 AGRICULTURE DISTRICT
- B1 BUSINESS DISTRICT LIMITED RETAIL
- B2 BUSINESS DISTRICT GENERAL RETAIL
- B3 BUSINESS DISTRICT LARGE RETAIL
- B4 COUNTY ZONING DISTRICT
- B5 BUSINESS HISTORICAL DISTRICT
- C1 COMMERCIAL DISTRICT
- E1 ONE FAMILY DISTRICT
- E2 ONE FAMILY DISTRICT
- E3 ONE FAMILY DISTRICT
- E5 ONE FAMILY DISTRICT
- I1 MANUFACTURING DISTRICT LIMITED
- I2 INDUSTRIAL LIGHT
- R1 ONE FAMILY DISTRICT
- R2 ONE FAMILY DISTRICT
- R3 TWO FAMILY DISTRICT
- R4 MULTIPLE FAMILY DISTRICT
- SD SPECIAL DEVELOPMENT DISTRICT
- PD PLANNED DEVELOPMENT

NO.	DATE	DESCRIPTION
1	03/17/2015	ADOPTED
2	03/17/2015	ADOPTED
3	03/17/2015	ADOPTED
4	03/17/2015	ADOPTED
5	03/17/2015	ADOPTED
6	03/17/2015	ADOPTED
7	03/17/2015	ADOPTED
8	03/17/2015	ADOPTED
9	03/17/2015	ADOPTED
10	03/17/2015	ADOPTED
11	03/17/2015	ADOPTED
12	03/17/2015	ADOPTED
13	03/17/2015	ADOPTED
14	03/17/2015	ADOPTED
15	03/17/2015	ADOPTED
16	03/17/2015	ADOPTED
17	03/17/2015	ADOPTED
18	03/17/2015	ADOPTED
19	03/17/2015	ADOPTED
20	03/17/2015	ADOPTED
21	03/17/2015	ADOPTED
22	03/17/2015	ADOPTED
23	03/17/2015	ADOPTED
24	03/17/2015	ADOPTED
25	03/17/2015	ADOPTED
26	03/17/2015	ADOPTED
27	03/17/2015	ADOPTED
28	03/17/2015	ADOPTED
29	03/17/2015	ADOPTED
30	03/17/2015	ADOPTED
31	03/17/2015	ADOPTED
32	03/17/2015	ADOPTED
33	03/17/2015	ADOPTED
34	03/17/2015	ADOPTED
35	03/17/2015	ADOPTED
36	03/17/2015	ADOPTED
37	03/17/2015	ADOPTED
38	03/17/2015	ADOPTED
39	03/17/2015	ADOPTED
40	03/17/2015	ADOPTED
41	03/17/2015	ADOPTED
42	03/17/2015	ADOPTED
43	03/17/2015	ADOPTED
44	03/17/2015	ADOPTED
45	03/17/2015	ADOPTED
46	03/17/2015	ADOPTED
47	03/17/2015	ADOPTED
48	03/17/2015	ADOPTED
49	03/17/2015	ADOPTED
50	03/17/2015	ADOPTED
51	03/17/2015	ADOPTED
52	03/17/2015	ADOPTED
53	03/17/2015	ADOPTED
54	03/17/2015	ADOPTED
55	03/17/2015	ADOPTED
56	03/17/2015	ADOPTED
57	03/17/2015	ADOPTED
58	03/17/2015	ADOPTED
59	03/17/2015	ADOPTED
60	03/17/2015	ADOPTED
61	03/17/2015	ADOPTED
62	03/17/2015	ADOPTED
63	03/17/2015	ADOPTED
64	03/17/2015	ADOPTED
65	03/17/2015	ADOPTED
66	03/17/2015	ADOPTED
67	03/17/2015	ADOPTED
68	03/17/2015	ADOPTED
69	03/17/2015	ADOPTED
70	03/17/2015	ADOPTED
71	03/17/2015	ADOPTED
72	03/17/2015	ADOPTED
73	03/17/2015	ADOPTED
74	03/17/2015	ADOPTED
75	03/17/2015	ADOPTED
76	03/17/2015	ADOPTED
77	03/17/2015	ADOPTED
78	03/17/2015	ADOPTED
79	03/17/2015	ADOPTED
80	03/17/2015	ADOPTED
81	03/17/2015	ADOPTED
82	03/17/2015	ADOPTED
83	03/17/2015	ADOPTED
84	03/17/2015	ADOPTED
85	03/17/2015	ADOPTED
86	03/17/2015	ADOPTED
87	03/17/2015	ADOPTED
88	03/17/2015	ADOPTED
89	03/17/2015	ADOPTED
90	03/17/2015	ADOPTED
91	03/17/2015	ADOPTED
92	03/17/2015	ADOPTED
93	03/17/2015	ADOPTED
94	03/17/2015	ADOPTED
95	03/17/2015	ADOPTED
96	03/17/2015	ADOPTED
97	03/17/2015	ADOPTED
98	03/17/2015	ADOPTED
99	03/17/2015	ADOPTED
100	03/17/2015	ADOPTED



VILLAGE OF JOHNSBURG
OFFICIAL ZONING MAP
2024



SHEET ORIENTATION

(IN FEET)
1 inch = 1000 ft

HORIZ. SCALE: 1" = 1000'
DATE: 03-17-2015

VERT. SCALE: SUBMITTAL: OFFICIAL:

DWG. BY: CHK. BY:

PROJECT NO. JOHN-20140062

SHEET NO. 1 OF 1

Prepared by: Planning Dept. 15, 2024 - 4:15pm
 Review by: Planning Dept.
 Approved by: Village Board Meeting 03/17/2024
 County: Fox (13) Johnson County, Illinois
 Project: Fox (13) Johnson County, Illinois
 License: Professional Land Surveyor No. 0224-001234 (Professional Seal)
 License: Professional Engineer No. 0224-001234 (Professional Seal)
 License: Professional Architect No. 0224-001234 (Professional Seal)
 License: Professional Planner No. 0224-001234 (Professional Seal)